



ROCKFORD  
HOMES

*Rockford Series*

# The Rockingham

MULTI-LEVEL

CRAFTSMAN

3,540+ SQ. FT. • 4 BED • 3.5 BATH • 3-CAR GARAGE

Rockford Series

# The Rockingham

MULTI-LEVEL

## FIRST FLOOR BASE



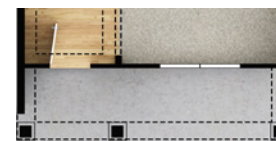
OPTIONAL MUD ROOM SHELF



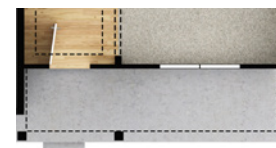
OPTIONAL FIREPLACE



OPTIONAL BUILT-IN KITCHEN



OPTIONAL CRAFTSMAN ELEVATION



OPTIONAL FOLK VICTORIAN ELEVATION

3,540+ SQ. FT. • 4 BED • 3.5 BATH • 3-CAR GARAGE



*Rockford Series*

# The Rockingham

MULTI-LEVEL

## SECOND FLOOR BASE



**OPTIONAL  
LAUNDRY  
CABINETS**



**OPTIONAL  
FOLK VICTORIAN  
ELEVATION**



**OPTIONAL  
CRAFTSMAN  
ELEVATION**

**3,540+ SQ. FT. • 4 BED • 3.5 BATH • 3-CAR GARAGE**

*Rockford Series*

# The Rockingham

ADDITIONAL EXTERIOR DESIGNS



**FOLK VICTORIAN**



**SHINGLE**



**Corporate Office - Rockford Homes**  
999 Polaris Parkway - Suite 200 | Columbus, OH 43240  
**614-785-0015**

**RockfordHomes.net**

Because we are constantly improving our product, we reserve the right to revise, change, and / or substitute product features, dimensions, specifications, architectural details and designs without notice. This brochure is for illustration purposes only and is not part of a legal contract. **RH - 01/01/2024**

